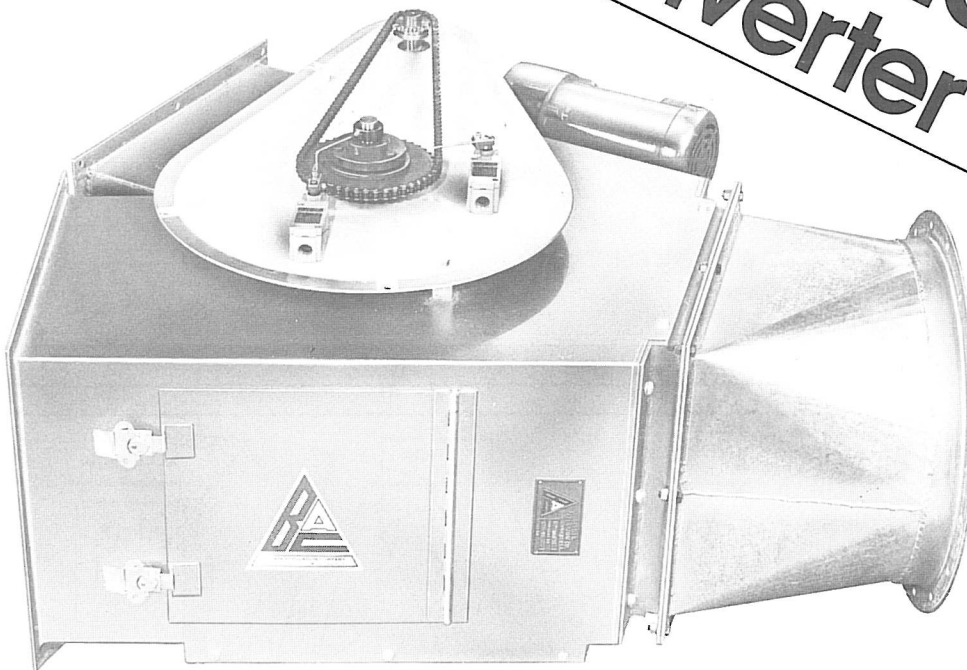


# BloApCo Diverter Valves



## Segregates Scrap!

Unique design  
eliminates  
diverter clogging

BloApCo Diverter Valves provide a fast positive change in scrap flow. They are remotely controlled and permit users to separate scrap by color, material, grades, or condition i.e., clean and contaminated. They are true high pressure diverters and are designed to be "sealed" into the system. Two models are available for both the suction side or pressure side of a pneumatic system.

---

### Features:

- Unique diverter "bucket" won't clog or impede air flow
- "Sealed" unit for highest efficiency
- Direct chain drive for fast, positive diverter action
- Can be installed on either suction or pressure side of system
- Available in any size to fit your present duct work
- Permanently lubricated, ball-bearing pivot
- Remote control

### Construction

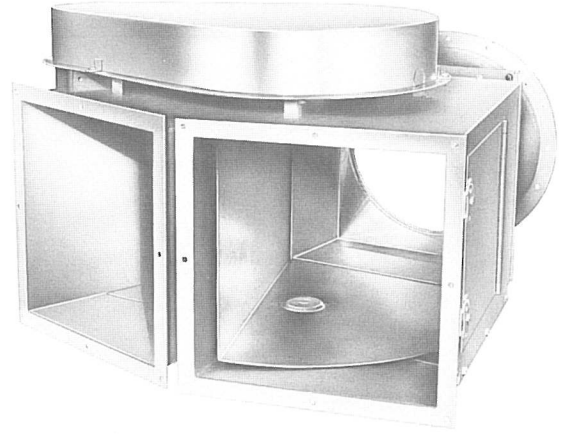
Extreme care is taken in manufacture to ensure smooth, uninterrupted flow of material. The diverters are made of heavy-gauge metal. All internal welds are ground smooth. The pivot is a permanently lubricated ball-bearing . . . to eliminate maintenance. An external access door is provided for easy access and inspection. To ensure positive action, the diverter bucket is controlled by an electric motor through a direct chain drive or by means of an air cylinder.

### Sizes

BloApCo Diverter Valves can be made in any size. They can also be made to match existing duct work.

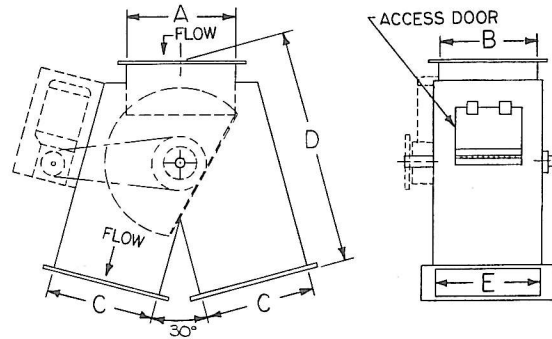
# Unique Diverter "Bucket"

Some diverter valves rely on a simple, flat diverter blade which can easily become clogged or blocked by scrap. When this happens, the blade becomes lodged in the middle position . . . allowing scrap to be sent to both sides simultaneously. The BloApCo Diverter Valve has a unique diverter "bucket" which completely seals off one side, while allowing complete free air and scrap passage to the other.



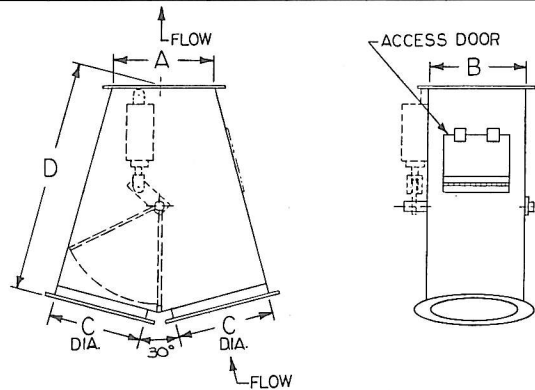
## Specifications

### Pressure Side Switch

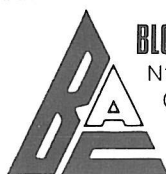


18	16	16	18	35 $\frac{5}{8}$	18	19	16	16	18	35 $\frac{5}{8}$	18
16	15	15	16	32 $\frac{1}{8}$	16	17	15	15	16	32 $\frac{1}{8}$	16
14	13	13	14	32 $\frac{1}{4}$	14	15	13	13	14	32 $\frac{1}{4}$	14
12	11	12	11	30 $\frac{1}{2}$	13	13	11	12	11	30 $\frac{1}{2}$	13
10	10	10	9	27 $\frac{1}{4}$	11	11	10	10	9	27 $\frac{1}{4}$	11
8	8	8	9	25 $\frac{1}{4}$	9	9	8	8	9	25 $\frac{1}{4}$	9
6	5 $\frac{1}{2}$	5 $\frac{1}{2}$	6 $\frac{1}{2}$	24 $\frac{3}{4}$	6 $\frac{1}{2}$	7	5 $\frac{1}{2}$	5 $\frac{1}{2}$	6 $\frac{1}{2}$	24 $\frac{3}{4}$	6 $\frac{1}{2}$
Switch	A	B	C	D	E	Switch	A	B	C	D	E

### Suction Side Switch



18	19	19	18	49 $\frac{7}{8}$	19	21	21	19	54 $\frac{3}{4}$
16	17	17	16	45 $\frac{1}{4}$	17	19	19	17	49 $\frac{7}{8}$
14	15	15	14	40 $\frac{1}{8}$	15	17	17	15	45
12	13	13	12	35 $\frac{3}{8}$	13	15	15	13	40 $\frac{1}{8}$
10	11	11	10	30 $\frac{3}{8}$	11	13	13	11	35 $\frac{3}{8}$
8	9	9	8	25 $\frac{9}{16}$	9	11	11	9	30 $\frac{3}{8}$
6	7	7	6	20 $\frac{3}{4}$	7	9	9	7	25 $\frac{9}{16}$
Switch	A	B	C	D	Switch	A	B	C	D



**BLOWER APPLICATION COMPANY, INC.**

N114 W19125 CLINTON DR., P.O. BOX 279

GERMANTOWN, WI 53022

PHONE (414) 255-5580

FAX (414) 255-3446